



BRAIN QUEST PUZZLER



QUESTIONS



LANGUAGE
ARTS

You can end a written sentence with one of three marks. Name two.



MATH

Which adds up to 31:
 $16 + 15$ or $14 + 13$?



SOCIAL
STUDIES

How often do we elect a President of the United States?



LANGUAGE
ARTS

Which happens first: painters paint the house or carpenters put in windows and doors?



MATH

My dad took a nap from 1:30 to 3:00. How long did he sleep?



SCIENCE

Which material comes from a plant: leather or rubber?



MISCELLANY

What is the short way of saying "cellular phone"?

ANSWERS



LANGUAGE
ARTS

period (.),
question mark (?),
exclamation point (!)



MATH

$16 + 15$



SOCIAL
STUDIES

every four years



LANGUAGE
ARTS

carpenters put in windows and doors



MATH

one and a half hours (1½ hours), or 1 hour and 30 minutes



SCIENCE

rubber (from the juice of certain tropical plants)



MISCELLANY

cell phone or cell



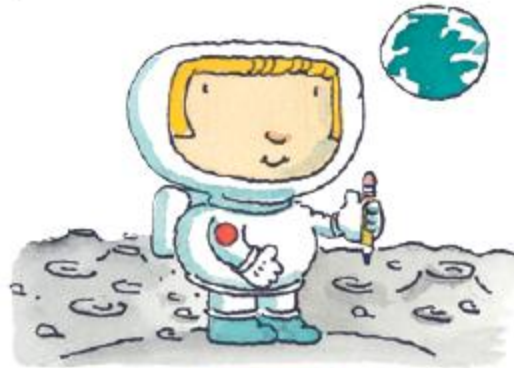
BRAIN QUEST PUZZLER



DROPPED ON THE MOON

Due to the moon's low gravity, solid objects weigh one-sixth of what they weigh on Earth. If you traveled to the moon and dropped a pencil, what would happen?

- a) The pencil would float away
- b) The pencil would float in place
- c) The pencil would fall to the surface of the moon.



DROPPED ON THE MOON

Due to the moon's low gravity, solid objects weigh one-sixth of what they weigh on Earth. If you traveled to the moon and dropped a pencil, what would happen?

- a) The pencil would float away
- b) The pencil would float in place
- c) The pencil would fall to the surface of the moon.

